

# COVE BROOK GREENWAY GROUP



## INSIDE THIS ISSUE

|                             |   |
|-----------------------------|---|
| <i>Work Party Report</i>    | 2 |
| <i>The Waxwing</i>          | 2 |
| <i>Can You Help?</i>        | 3 |
| <i>Rowhill Fayre</i>        | 4 |
| <i>Dates for your Diary</i> | 4 |



**Veolia Recycling Centre**



## CHAIRMAN'S CHATTER - *Hilda Anscombe*

Family illness and a car accident have kept me busy these last few months; so I've not been along the brook as much as usual since July. However, on the October work-party I managed to plant some foxgloves in the woodland near Curly Bridge, which should seed and produce more plants next year. Yellow toadflax (*small snapdragon type flowers*) were seen still in bloom on the November work party and beautiful Red Admiral butterflies have been feasting on the rotting windfall apples in my garden. Some people are surprised to see butterflies at this time of year, but Red Admirals hibernate here in the winter and then lay their eggs on nettles in the Spring. I'm now looking forward to our Christmas Sparkle Work Party on 14<sup>th</sup> December, when our volunteers will enjoy a mug of mulled wine and mince pies as a thank you for all their hard work. Hope to see you there.

## WHAT HAPPENS TO OUR RUBBISH? *Dorothy Toynbee*

Recently three CBGG members paid a visit the Veolia Recycling Depot at Alton, the largest of its kind in England. Veolia employs 1,200 personnel at the site and, despite modern mechanisation, will always need people, as a machine does not have the human ability to recognize the amazing variety of materials on the conveyor belts.

Kitted out with Hi-Vis jackets, safety helmets and safety glasses a group of us set forth. We followed our guide to the ground floor, then climbed up to the first platform, where several operators were picking out the cardboard from a conveyor belt. Up more steps to the next platform and another conveyor belt, where men and women were sorting various materials. The conveyor belts are equipped with magnets, which collect the ferrous metals; the aluminium drink cans are collected separately.

At present the depot does not have the necessary machinery to deal with all the different types of plastic and current buyers only want a specific type of plastic. This is why only plastic drink bottles go in to our recycling bins.

Our guide explained that, once all the saleable material had been retrieved, the residue is sent to Marchwood, near Southampton. Here it is burnt and converted into enough electricity to supply 54,000 homes.

A knowledgeable young lady gave us an interesting talk and we were encouraged to ask questions. I was interested to discover how they dealt with broken glass and it was explained that the conveyor belts have pulverisers, which crush any broken glass or china.

The tour lasted about 1½ hours and was well worth it. I am now more keen than ever about recycling, as I now know how much money can be made from rubbish. Our group's regular litter picks along the Brook not only improve the countryside and the local environment, but help raise money for Hampshire County Council, which will benefit all of us. A win-win scenario.

## WORK PARTY UPDATE – *Paul Sanders*

### August 10<sup>th</sup> 2013

11 of us met at Birchbrook. We cut and dug up a large section of bramble encroaching on the cut grass area. Overhanging branches were cut back from the children's nature trail and the inside of the hedge was also trimmed.

### September 14<sup>th</sup>

This time 15 of us met in Southwood Meadows to again tackle more bramble. As on the August work party we first cut and cleared the bramble before digging up the roots. Some pathways were cut back and some Birch and Willow saplings, which had regrown in the wet grassland area, were cut and dug up. As always a large amount of litter was removed.

### October 12<sup>th</sup>

For the first of our end of year litter picks, seventeen volunteers met at the Curly Bridge. We collected over thirty bags of rubbish from the woodland nearby, but most was found on the path to the football ground and along the outside of the stadium itself. We also found abandoned trolleys, pushchairs and bicycles.

### November 9<sup>th</sup>

On a miserable morning sixteen of us gathered at the Mayfield Road bridge for the next stage of our clean up. Once again we soon collected dozens of bags of rubbish. Despite having to abandon the work party early owing to the atrocious weather, we had covered the length of the brook between the Curly Bridge and the footbridge at Houseman road, so an excellent effort!

## THE WAXWING (*BOMBYCILLA GACRRAULUS*) – *Franc Hall*



I was prompted to pen this article by a mention of this beautiful bird in an earlier Newsletter and the unexpected "invasion" of up to 20 birds at the end of February this year. They were busily devouring the remains of the Rowan berries in the garden and eventually flew across Southwood Meadows toward Hazel Avenue.

(My first, and only other, encounter was at the age of 9 or 10 (1956/57) when I chanced upon a dead specimen in my home village in South Oxfordshire. It took pride of place in the museum in Reading where it was identified and remained on display for several years.)

This exotic looking bird is approx 7 ½" (18 cm) long and, in flight and at a distance, its silhouette resembles a starling. A gregarious bird, it is usually seen in small flocks over its winter range.

**Plumage:** The Waxwing is recognised by its pinkish plumage, pink, fluffy, backward facing crest, and black mask and bill. When closed, the wings appear pinkish-hazel with black primary feathers, barred white with yellow leading edges and waxy red spots. The lower back and upper tail are blue grey, the lower tail feathers are black with a yellow tip and the rump feathers are a russet orange. The females and juveniles have paler markings and the juveniles lack the bright wing markings and black bib.



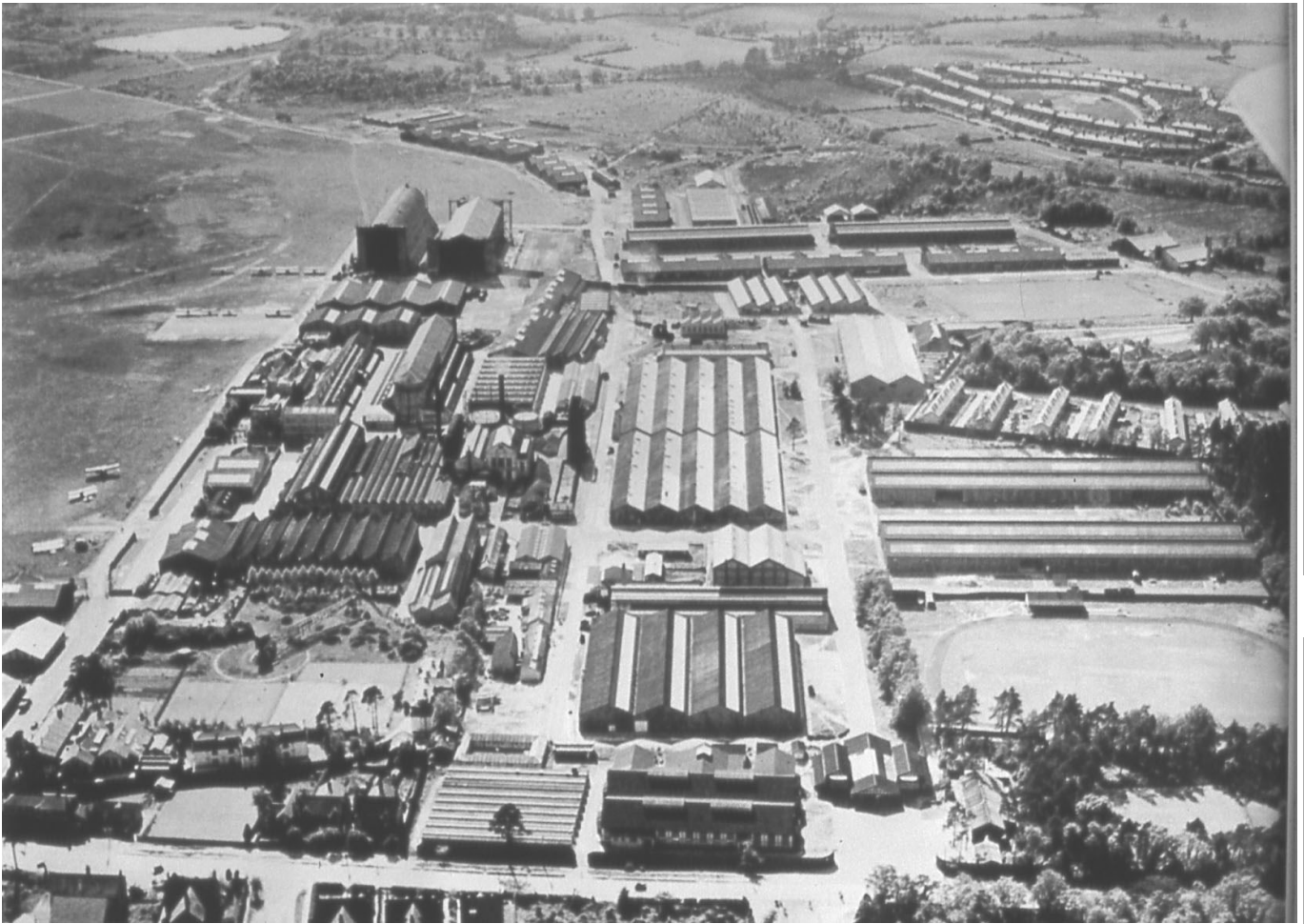
**Song:** No real song, but it utters a constant chattering high-pitched trill a "trrrreee" or "siirrr" note ending in a weak whistle.

**Habitat:** In the fir and pine forests of North East, from northern Europe (*not UK*), north Asia, Japan, Alaska, northern Canada and some North American States. It's a rare winter visitor to the UK usually seen in Eastern Scotland and North East England. Only in the severest winters can it be found further south and rarely in the southern counties.

**Food:** Over its summer range it is largely insectivorous, during the winter it survives largely upon fruit and berries such as Rowan and Hawthorn.

(Illustrations taken from original paintings by Franc Hall)

## CAN YOU HELP?



A gentleman from Australia has contacted us in an attempt to find information about his ancestors. His great-great-great grandfather, William Murrell, is described in the old booklet "Cove-Old and New" as having owned Murrells Farm, an old hop farm at Cove in the mid-19th century. The location is given as "...near the Reservoir." Cove Reservoir was a meadow called Alder Green, which apparently had a stream flowing through it."

Jo Gosney, of The Farnborough Society, has already unearthed the following information.

"Cove Reservoir was on Cove Common, now part of the airfield. Constructed by the army around 1860, it was filled in during the Second World War, as happened to many ponds and waterways that could be used by enemy aircraft as Identification points.

There were quite a number of streams in the vicinity of the reservoir. The photograph above, shows the reservoir in the top left hand corner. We are unsure which of the many local farms was farmed by William Murrell but, bearing in mind the reference in "Cove Old and New", it would appear the farm was near to the reservoir. The nearest one was Eelmoor Farm, owned by the Arrow family for many years. However, we do not know who the previous owners were and none of the records, i.e. censuses, etc., show Murrell Farm. In the photograph Eelmoor Farm, which was demolished some years ago, is further along to the right from Cove Reservoir, in the group of trees immediately to the left of an obvious housing estate, i.e. Raborough (shaped rather like a sideways letter D."

It would be lovely to find out as much as possible to enable us to help this gentleman with his research and, in the process, find out more about our area. He is planning a trip to Cove next year and then, with luck, we may be able to locate the site of the of the old farm."

We are aware that some farms were locally known by the name of the occupant, so perhaps this is what has happened. If anyone shed any further light on this, we would love to hear from you.



# Cove Brook

## GREENWAY



### CONTACT DETAILS

#### Web site

[www.covebrook.hampshire.org.uk](http://www.covebrook.hampshire.org.uk)

#### E-mail

[covebrookgg@yahoo.co.uk](mailto:covebrookgg@yahoo.co.uk)

#### Facebook

[www.facebook.com/groups/covebrook.greenway](http://www.facebook.com/groups/covebrook.greenway)

#### Telephone:

07510 881939

#### Chairman

Hilda Anscombe

#### Secretary

Antonia Hebbert

#### Work Parties

Paul Sanders  
(When, where & what  
we are doing)

#### Newsletter

Kathy Pitcher (Editor)  
Mike Burns (Distribution)

## ROWHILL FAYRE – *Bob & Mary Yelland*

On Saturday 9th November, we manned the Cove Brook Greenway Group stand at the Fayre for the first time. Apart from the Rowhill Volunteers, the Fleet Pond Society and RSPB for North Hampshire also attended. Plenty of people came, and we had lots of interest, some from those who had lived in Cove many years ago, others, new to the area. The most popular table was the one selling Home Made Cakes—they were very good! Rowhill Copse, is situated between Aldershot and Farnham on the junction of Cranmore Lane and the A325. It's a great place to visit for a walk and, on Sundays, you can visit their Field Centre where you can find information on the site as well as their shop and tea and coffee facilities. We will be visiting again, to walk the Nature Reserve, and we've promised to take part in the Fayre next year, it was really a lovely afternoon.



## DATES FOR YOUR DIARY

*All talks are FREE and are held at  
BLUNDEN HALL, Blunden Rd, Cove. GU14 8QP  
All welcome, refreshments provided. Donations are appreciated.  
Volunteers welcome at all Work Parties.  
(Children must be accompanied by a responsible adult.)*

### TALKS, MEETINGS & EVENTS

| Date                         | Time    | Subject   |
|------------------------------|---------|---|
| Tues<br>18 <sup>th</sup> Feb | 7:30 pm | <b>HISTORIC WORK ON COVE BROOK</b><br>A talk by Ryan Oakley of the Environment Agency<br><i>Meet at: Blunden Hall, Blunden Road, Cove, GU14 8QP</i> |

### WORK PARTIES – *Held on 2<sup>nd</sup> Saturday of each month*

|                             |          |  |
|-----------------------------|----------|--|
| Sat<br>14 <sup>th</sup> Dec | 10.00 am | <b>CHRISTMAS SPARKLE LITTER PICK</b><br>The last push of the year to get the Brook looking really good.<br><i>Don't miss the hot drinks and mince pies.</i><br><i>Meet at: Blunden Hall, Cove GU14 8QP</i>  |
| Sat<br>11 <sup>th</sup> Jan | 10.00 am | <b>WOODLAND MANAGEMENT</b><br>Working on site of the overgrown side of the golf practice area.<br><i>Meet at: Grasmere Road Car Park, Southwood, GU14 1LE</i>  |
| Sat<br>8 <sup>th</sup> Feb  | 10.00 am | <b>SCRUB CLEARANCE</b><br>Pruning, digging out bramble roots and general tidy up<br><i>Meet at: Grasmere Road Car Park, Southwood, GU14 1LE</i>  |
| Sat<br>8 <sup>th</sup> Mar  | 10.00 am | <b>WOODLAND MANAGEMENT</b><br>Sapling cutting, bramble bashing and general tidy up<br><i>Meet at: Cheyne Way, near Curly Bridge, Cove, GU14 8SA</i>  |
| Sat<br>12 <sup>th</sup> Apr | 10.00 am | <b>ANNUAL RUSHMOOR SPRING CLEAN</b><br>Our combined litter pick with Rushmoor Borough Council<br><i>Meet at: Curly Bridge, off Cheyne Way, Cove, GU14 8SA</i>  |